

# INTERRUTTORI/DEVIATORI/PULSANTI (LUMINOSI E NON LUMINOSI)

SWITCHES/BUTTONS (WITH AND WITHOUT LIGHT)



**IN.20**



**IN.21/IN.22**



**CAP.03 PVC**



**IN.20 - Interruttore luminoso unipolare 12 A 250 VAC.**

*IN.20 - Single-pole switch 12 A 250 VAC with light.*

**IN.21 - Deviatore unipolare non luminoso 12 A 250 VAC.**

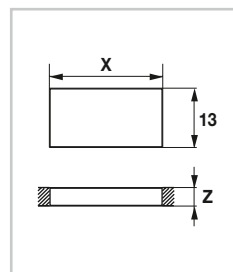
*IN.21 - Single-pole switch 12 A 250 VAC without light.*

**IN.22 - Pulsante unipolare non luminoso 12 A 250 VAC.**

*IN.22 - Single-pole button 12 A 250 VAC without light.*

**CAP.03 PVC - Cappuccio di protezione a polvere e spruzzi d'acqua.**

*CAP.03 PVC - Dust and water-spray protection cap.*

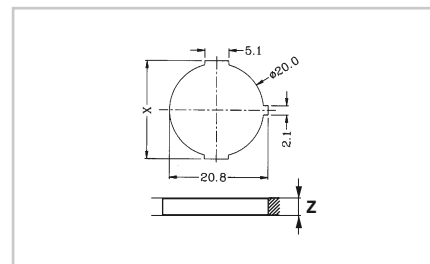


Z	X
0.75 - 1.25	19.20
1.25 - 2.00	19.40
2.00 - 3.00	19.60

**IN.24**



**IN.25/IN.26**



**IN.24 - Interruttore unipolare luminoso 12 A 250 VAC.**

*IN.24 - Single-pole switch 12 A 250 VAC with light.*

**IN.25 - Deviatore non luminoso 12 A 250 VAC.**

*IN.25 - Switch 12 A 250 VAC without light.*

**IN.26 - Pulsante non luminoso 12 A 250 VAC.**

*IN.26 - Button 12 A 250 VAC without light.*

Z	X
0.75 - 1.25	20.30
1.25 - 2.00	20.80
2.00 - 3.00	21.10

**IN.27**



**IN.28/IN.29**



**CAP.30 PVC**



**IN.27 - Interruttore luminoso 12 A 250 VAC.**

*IN.27 - Switch 12 A 250 VAC with light.*

**IN.28 - Deviatore non luminoso 12 A 250 VAC.**

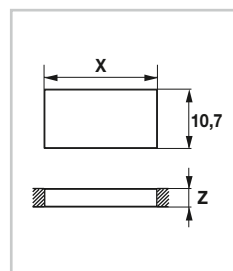
*IN.28 - Switch 12 A 250 VAC without light.*

**IN.29 - Pulsante non luminoso 12 A 250 VAC.**

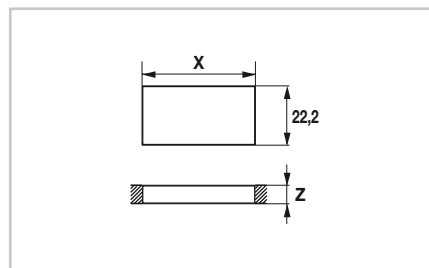
*IN.29 - Button 12 A 250 VAC without light.*

**CAP.30 PVC - Cappuccio di protezione a polvere e spruzzi d'acqua.**

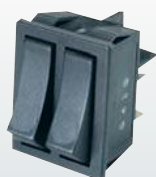
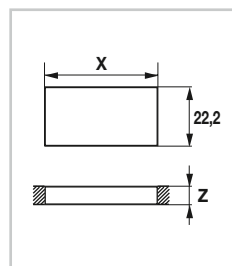
*CAP.30 PVC - Dust and water-spray protection cap.*



Z	X
0.75 - 1.25	30.30
1.25 - 2.00	30.50
2.00 - 3.00	30.70

**IN.31/IN.32****CAP.33 PVC****IN.31 - Deviatore non luminoso 12 A 250 VAC.***IN.31 - Switch 12 A 250 VAC without light.***IN.32 - Pulsante non luminoso 12 A 250 VAC.***IN.32 - Button 12 A 250 VAC without light.***CAP.33 PVC - Cappuccio di protezione a polvere e spruzzi d'acqua.***CAP.33 PVC - Dust and water-spray protection cap.*

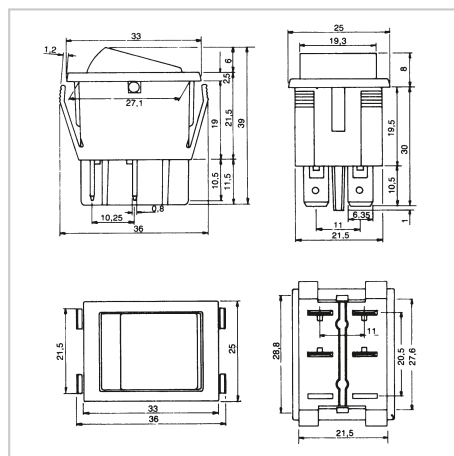
Z	X
0.75 - 1.25	19.20
1.25 - 2.00	19.40
2.00 - 3.00	19.60

**IN.34****IN.35****IN.38****IP.65****CAP.36 PVC****IN.34 - Deviatore non luminoso 20 A 250 VAC.***IN.34 - Switch 20 A 250 VAC without light.***IN.35 - Pulsante non luminoso 20 A 250 VAC.***IN.35 - Button 20 A 250 VAC without light.***IN.38 - Deviatore non luminoso 20 A 250 VAC.***IN.38 - Switch 20 A 250 VAC without light.***CAP.36 PVC - Cappuccio di protezione a polvere e spruzzi d'acqua.***CAP.33 PVC - Dust and water-spray protection cap.*

Z	X
0.75 - 1.25	30.30
1.25 - 2.00	30.50
2.00 - 3.00	30.70

## INTERRUTTORI LUMINOSI CON PROTEZIONE IN PVC

### BACKLIGHTED SWITCHES WITH PVC PROTECTION



Interruttori bipolari 16A 250V in materiale termoplastico per piccoli elettrodomestici.

*16A 250V bipolar switches in thermoplastic material for small electrical household appliances.*

**Articolo**  
Art.

**Colore**  
Colour

**IN.10R**

Rosso / Red

**IN.11V**

Verde / Green

**IN.12G**

Giallo / Yellow

**DELL'ERBA**